

Stakeholders Representatives Group Meeting

- Welcome/Stakeholder Introductions
- Meeting Purpose
- Project Overview
- Alignment Options (Segments 1 & 5)
- Technical Studies & Analysis
- Segment 7 – Sierra Gardens
- Next Steps



Meeting Purpose

- Provide Overview of Project
- Present Alignment Options
- Results of Technical Analysis
- Discuss Sierra Gardens Segment
- Receive Initial Feedback from SRG
- Inform SRG of Next Steps



Project Overview

2009 Feasibility Study

- Existing Conditions
- Opportunities/Constraints
- Purpose and Needs
- Alternatives Analysis
- Recommended Path Alignment
- Design Treatment



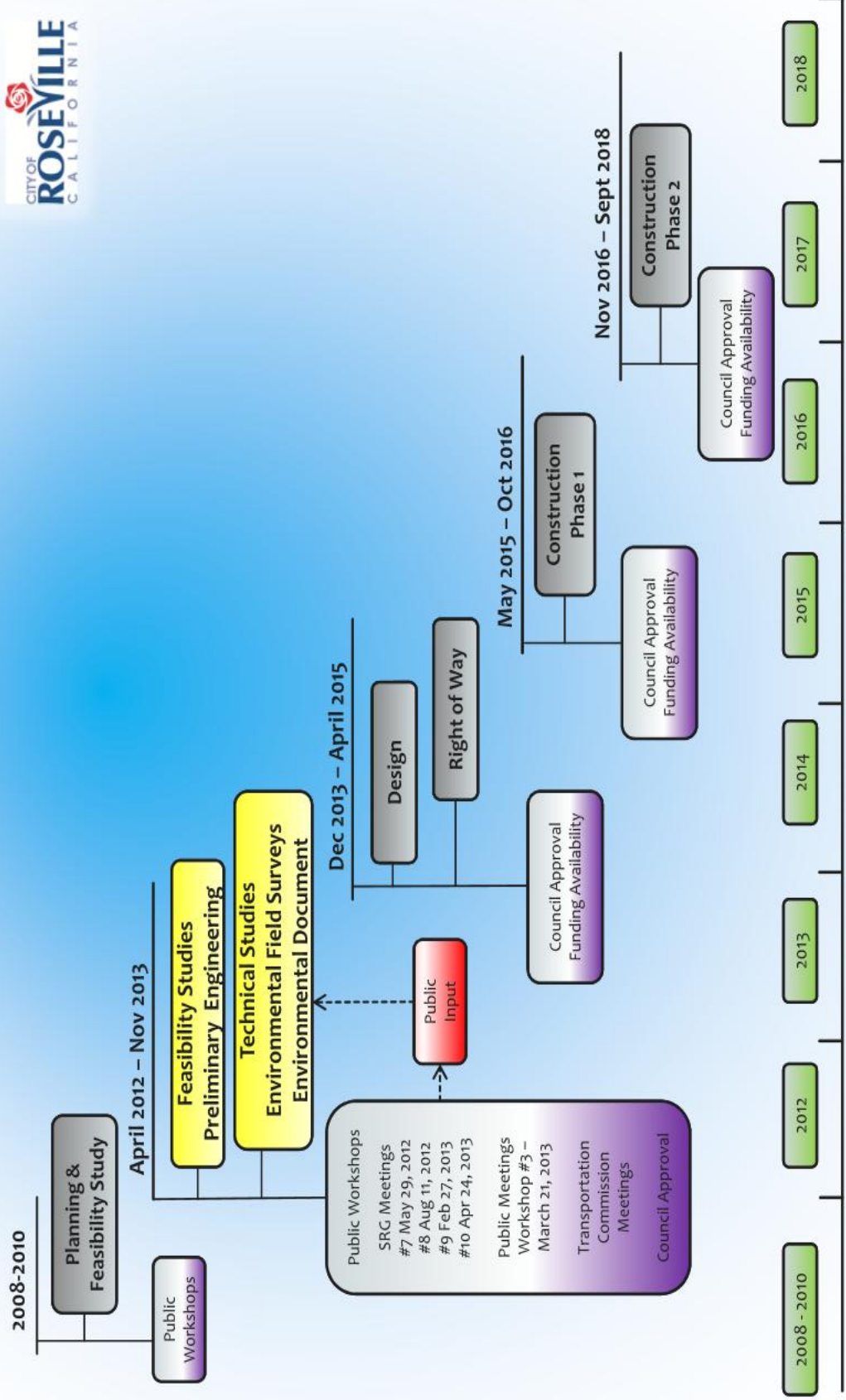


- Alternative 1A or 5A
- Alternative 1B or 5B
- Alternative 1C or 5C
- Base Path

DRY CREEK GREENWAY MULTI-USE TRAIL



DRY CREEK GREENWAY MULTI-USE TRAIL PROJECT



Public Outreach

- Public Outreach 2008-2010
 - 6 SRG Meetings
 - 2 Community Meetings
 - Neighborhood Meetings
 - Transportation Commission
- City Council Direction
 - Additional Feasibility Analysis for Hillcrest and Sunrise Segments
 - Environmental Review and Preliminary Engineering

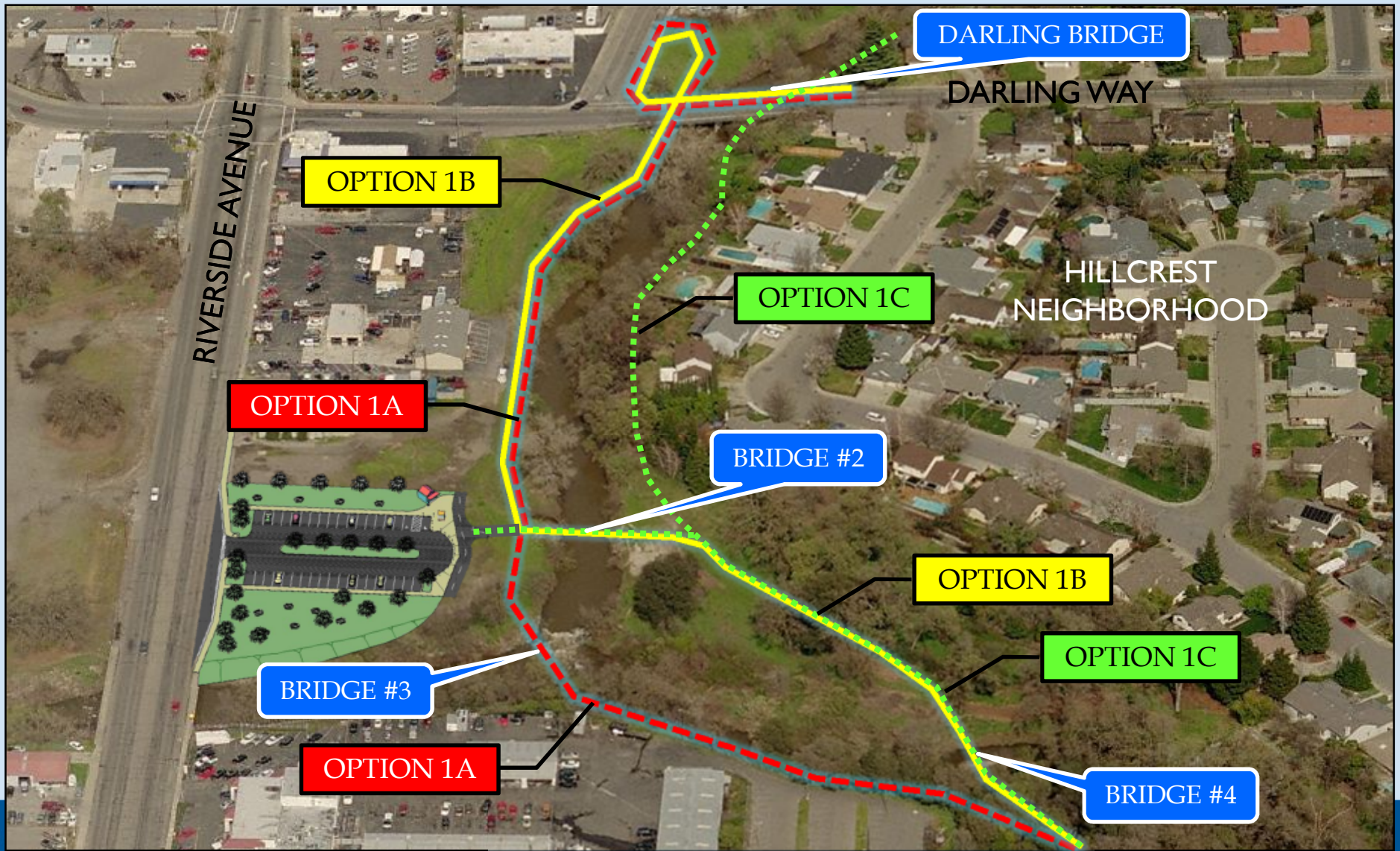


Detailed Feasibility Analysis

- Stakeholder Meeting #7
- Stakeholder Field Walk
- Alignment Options
- Technical Studies
 - Topographical Surveys
 - Hydraulic Analysis
 - Biologist Field Walk
 - Visual Simulations



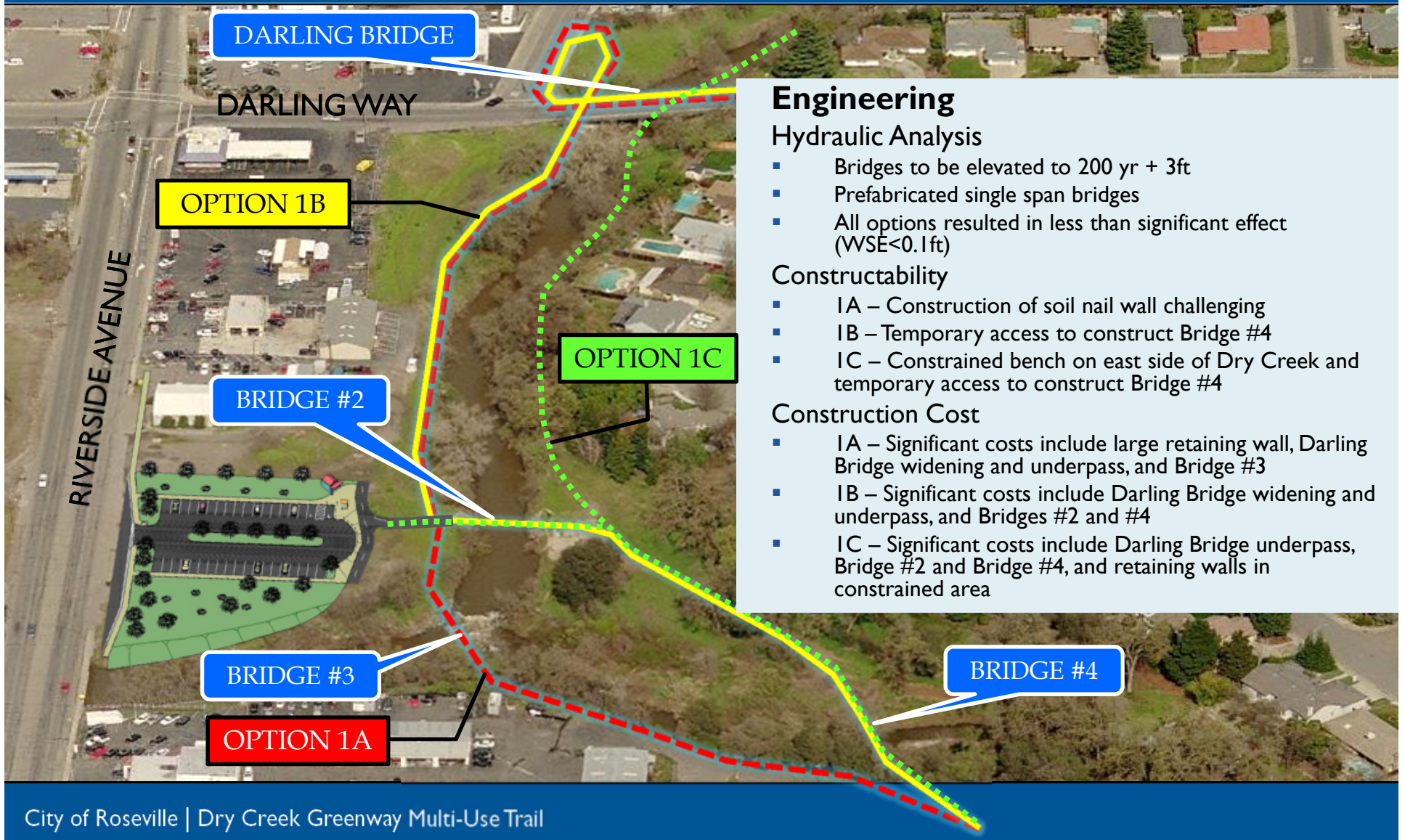
Segment I – Darling Way to Machado Lane



Segment 5 – Sunrise Avenue to Meadow Gate Drive



Segment I – Technical Analysis



Engineering

Hydraulic Analysis

- Bridges to be elevated to 200 yr + 3ft
- Prefabricated single span bridges
- All options resulted in less than significant effect (WSE<0.1ft)

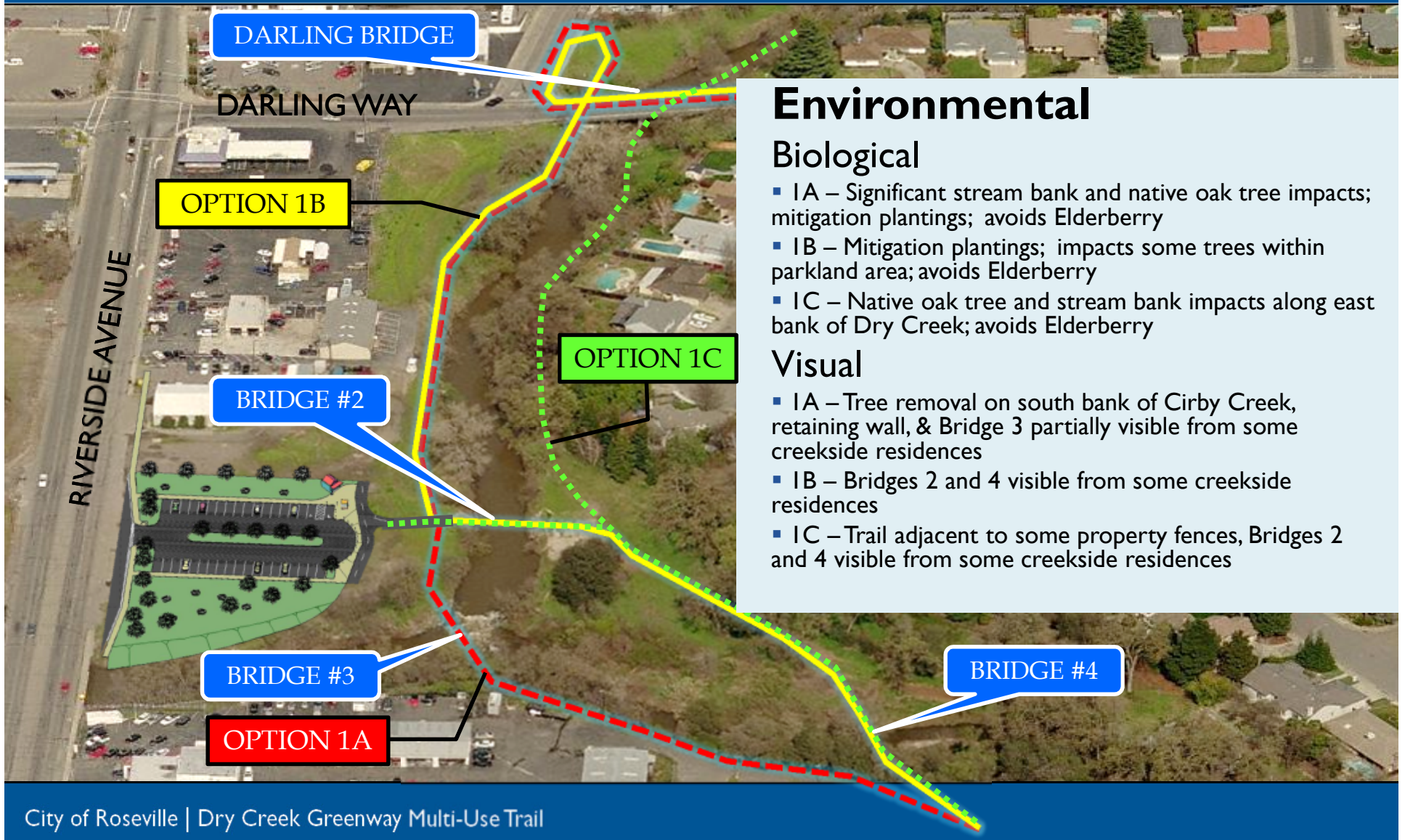
Constructability

- IA – Construction of soil nail wall challenging
- IB – Temporary access to construct Bridge #4
- IC – Constrained bench on east side of Dry Creek and temporary access to construct Bridge #4

Construction Cost

- IA – Significant costs include large retaining wall, Darling Bridge widening and underpass, and Bridge #3
- IB – Significant costs include Darling Bridge widening and underpass, and Bridges #2 and #4
- IC – Significant costs include Darling Bridge underpass, Bridge #2 and Bridge #4, and retaining walls in constrained area

Segment I – Technical Analysis



Environmental

Biological

- IA – Significant stream bank and native oak tree impacts; mitigation plantings; avoids Elderberry
- IB – Mitigation plantings; impacts some trees within parkland area; avoids Elderberry
- IC – Native oak tree and stream bank impacts along east bank of Dry Creek; avoids Elderberry

Visual

- IA – Tree removal on south bank of Cirby Creek, retaining wall, & Bridge 3 partially visible from some creekside residences
- IB – Bridges 2 and 4 visible from some creekside residences
- IC – Trail adjacent to some property fences, Bridges 2 and 4 visible from some creekside residences

Option 1A – Retaining Wall



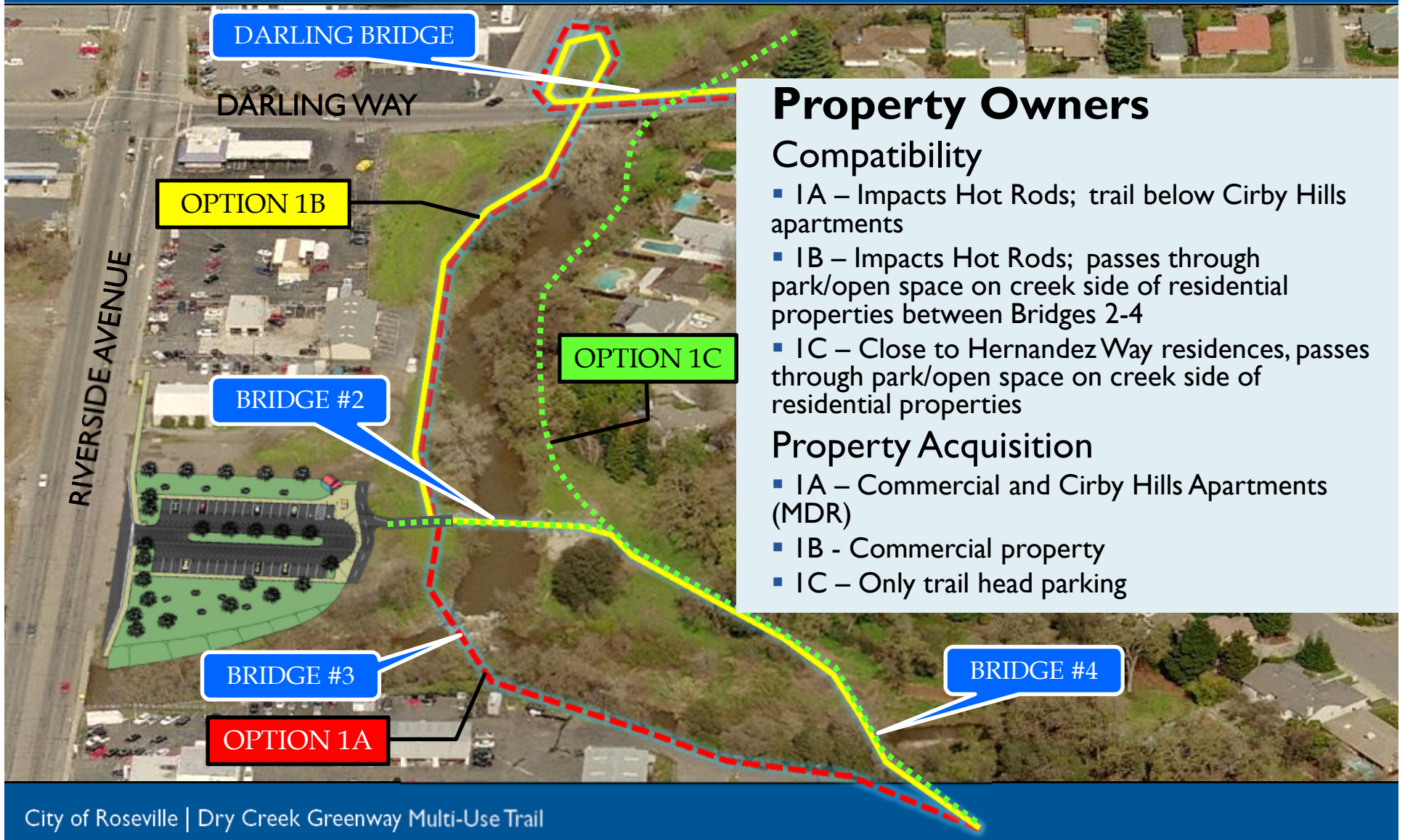
Bridge #2 (Option 1B and 1C)



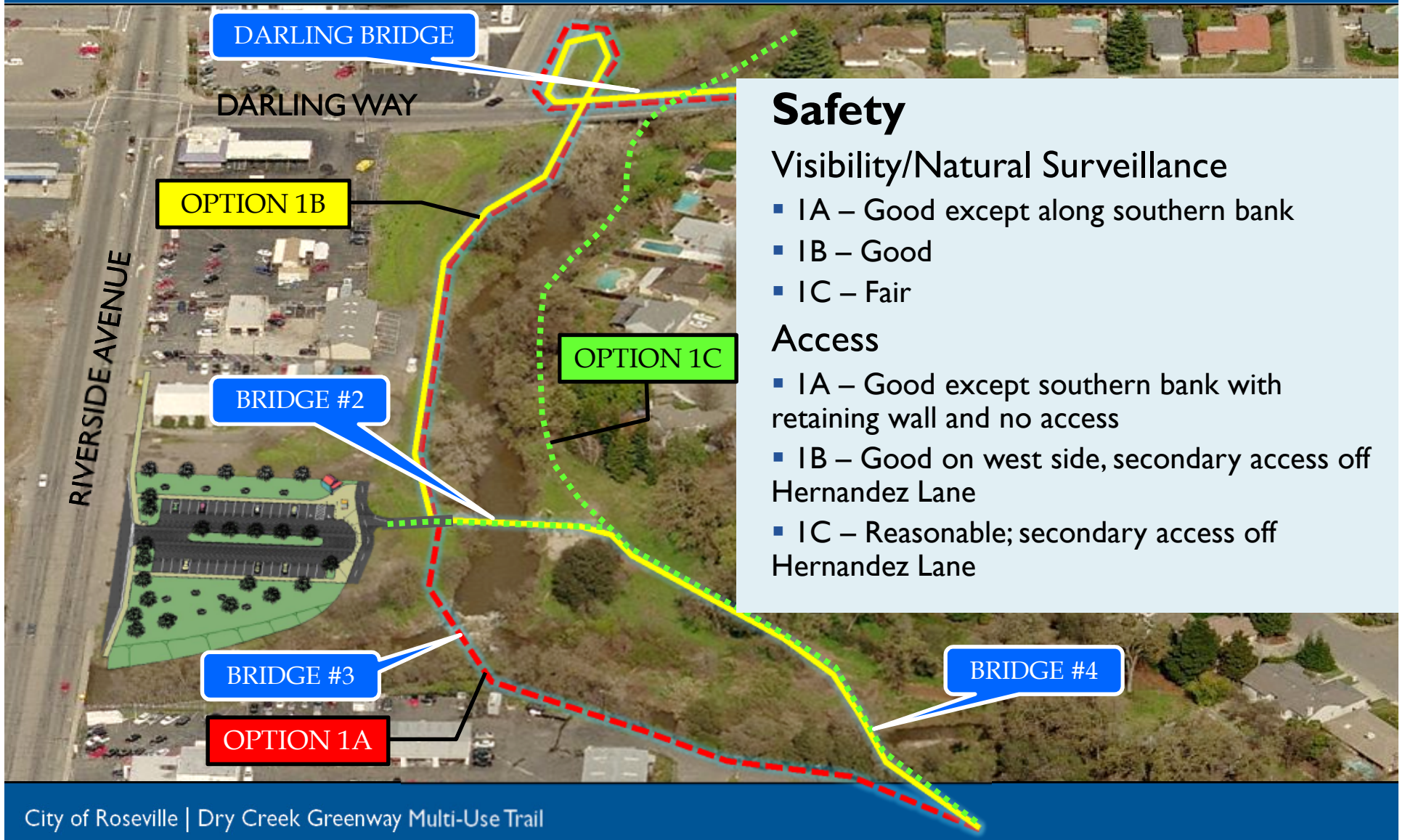
Bridge #4 (Option 1B and 1C)



Segment I – Technical Analysis



Segment I – Technical Analysis



Safety

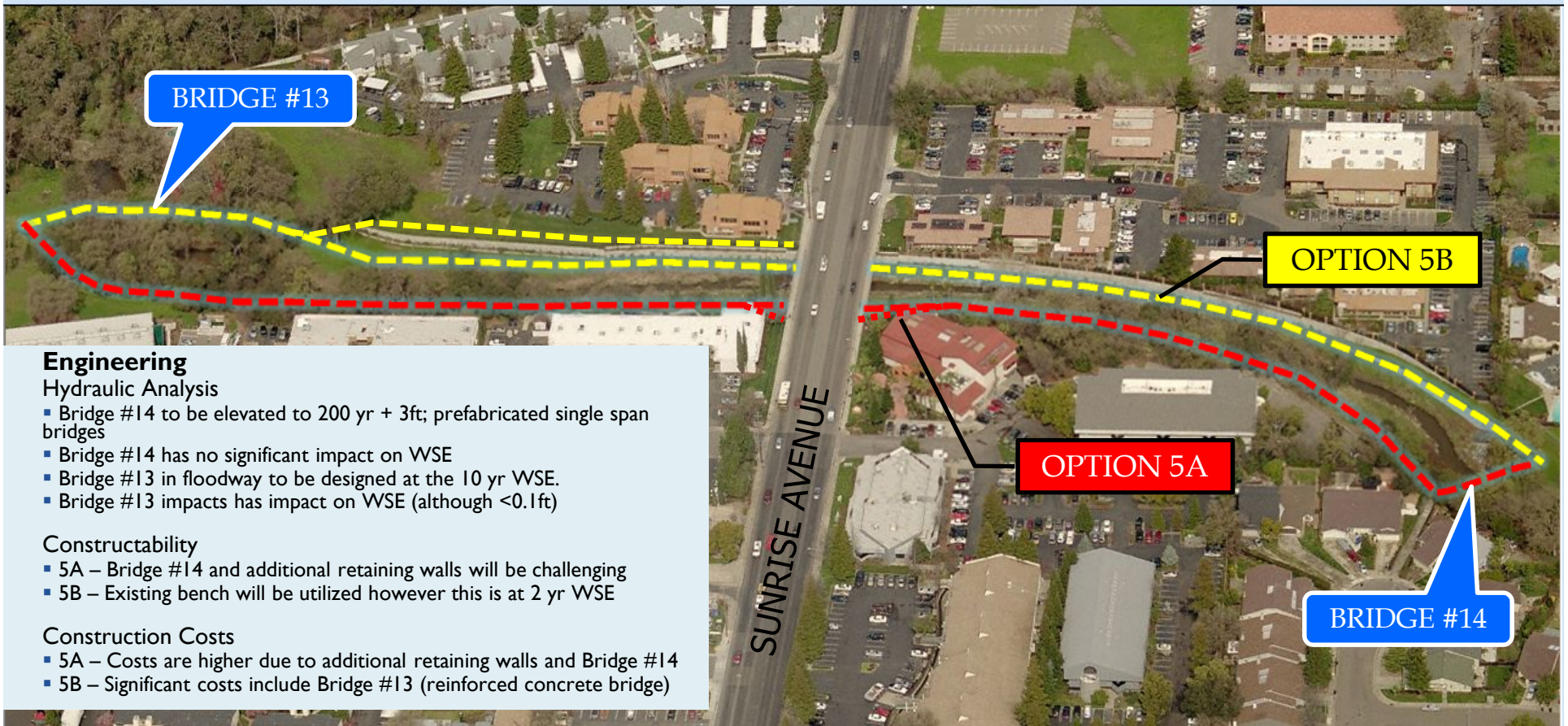
Visibility/Natural Surveillance

- IA – Good except along southern bank
- IB – Good
- IC – Fair

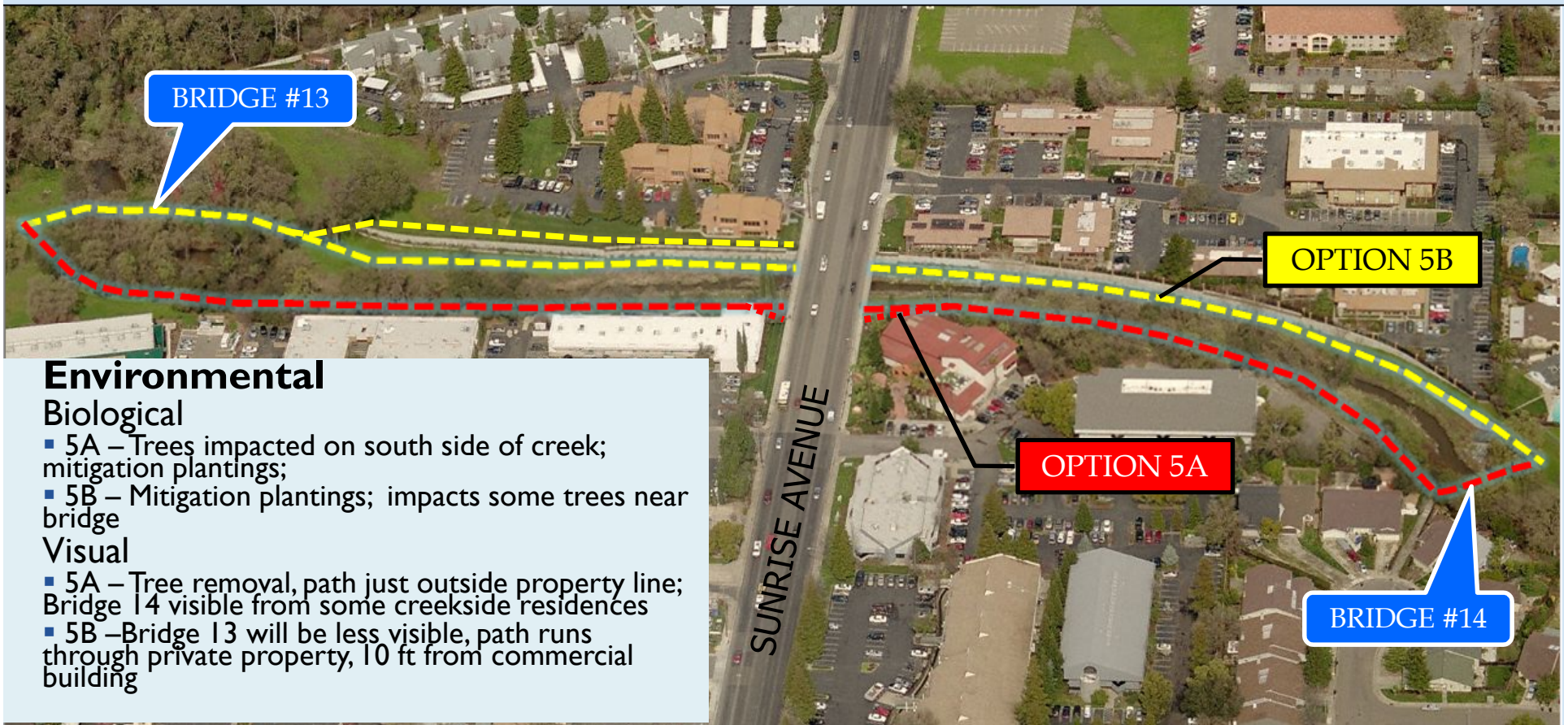
Access

- IA – Good except southern bank with retaining wall and no access
- IB – Good on west side, secondary access off Hernandez Lane
- IC – Reasonable; secondary access off Hernandez Lane

Segment 5 – Technical Analysis



Segment 5 – Technical Analysis



Environmental

Biological

- 5A – Trees impacted on south side of creek; mitigation plantings;
- 5B – Mitigation plantings; impacts some trees near bridge

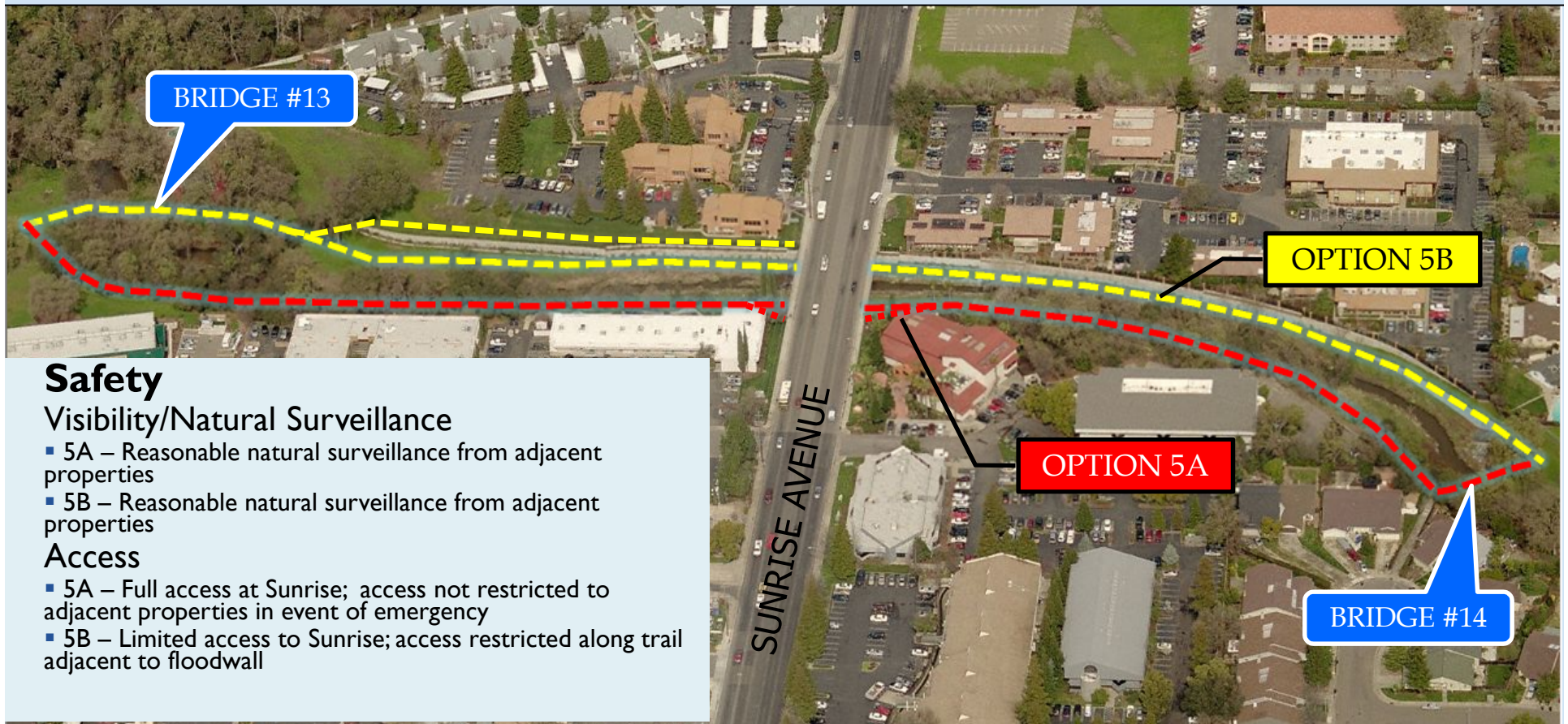
Visual

- 5A – Tree removal, path just outside property line; Bridge 14 visible from some creekside residences
- 5B – Bridge 13 will be less visible, path runs through private property, 10 ft from commercial building

Segment 5 – Technical Analysis



Segment 5 – Technical Analysis

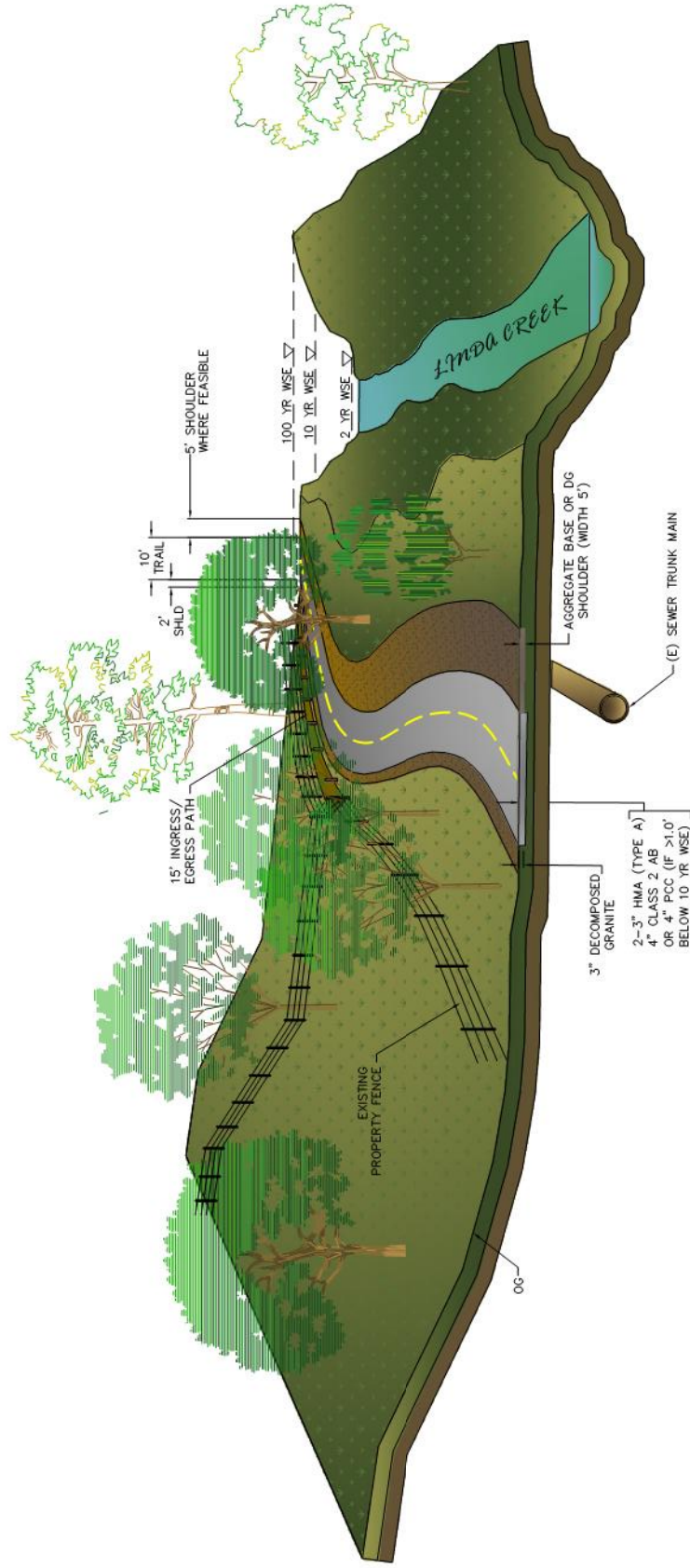




SIERRA GARDENS SEGMENT



Segment 7 – Sierra Gardens



TYPICAL TRAIL SECTION
SEGMENT 7 – SIERRA GARDENS
WITHIN CITY OWNED PROPERTY

Segment 7 – Sierra Gardens



TYPICAL TRAIL SECTION
SEGMENT 7 – SIERRA GARDENS
WITHIN PRIVATE PROPERTY

Stakeholders Representatives Group Meeting

- Welcome/Stakeholder Introductions
- Meeting Purpose
- Project Overview
- Alignment Options (Segments 1 & 5)
- Technical Studies & Analysis
- Segment 7 – Sierra Gardens
- **Next Steps**



Questions

